

sn German
Pouch-Pack
Technology

FME 50

Affordable, compact, flexible and robust.



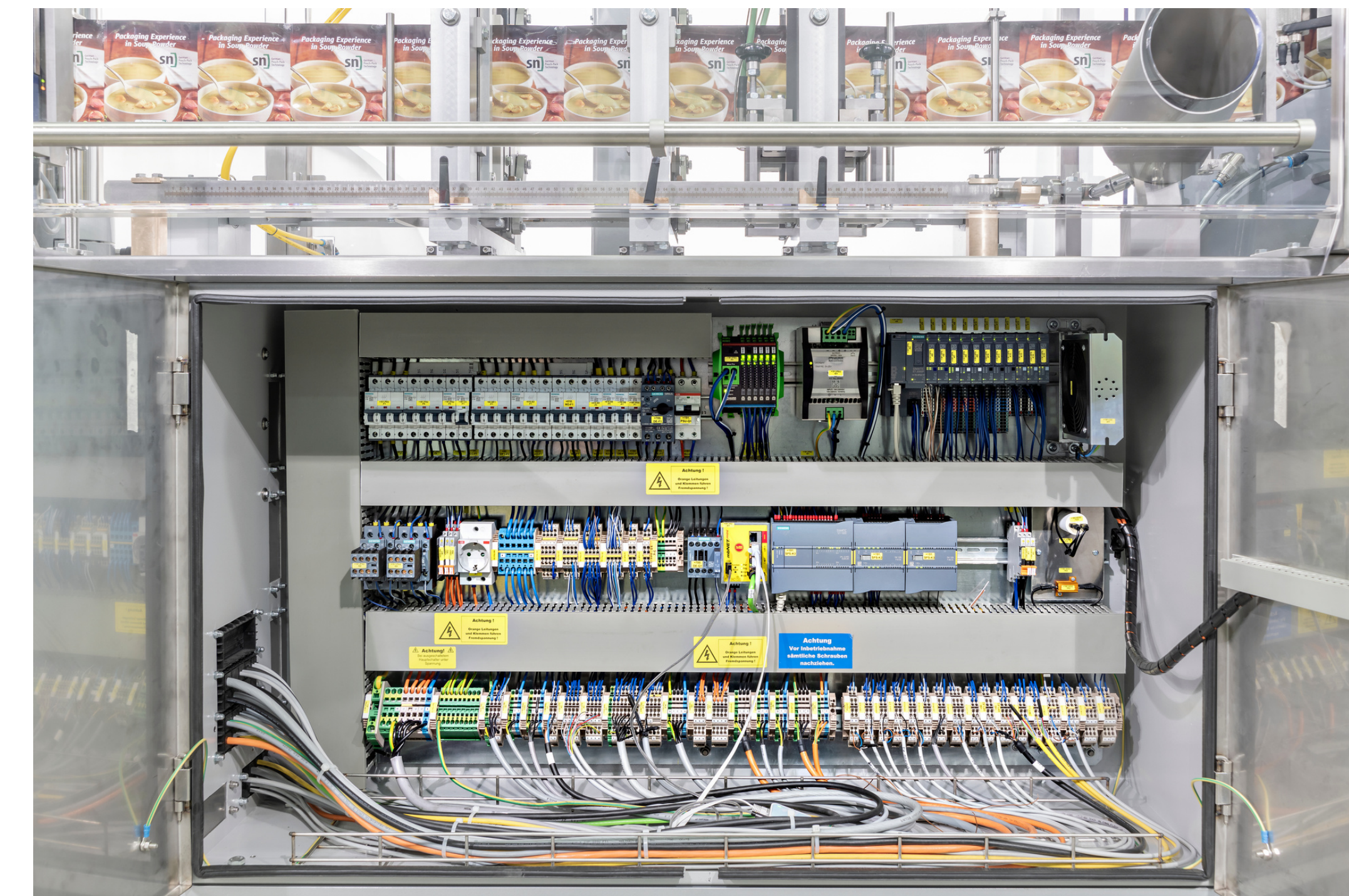
The perfect step up in flexible packaging

The SN Maschinenbau FME 50 form, fill & seal solution offers the perfect entry into the flexible pouch packaging world.

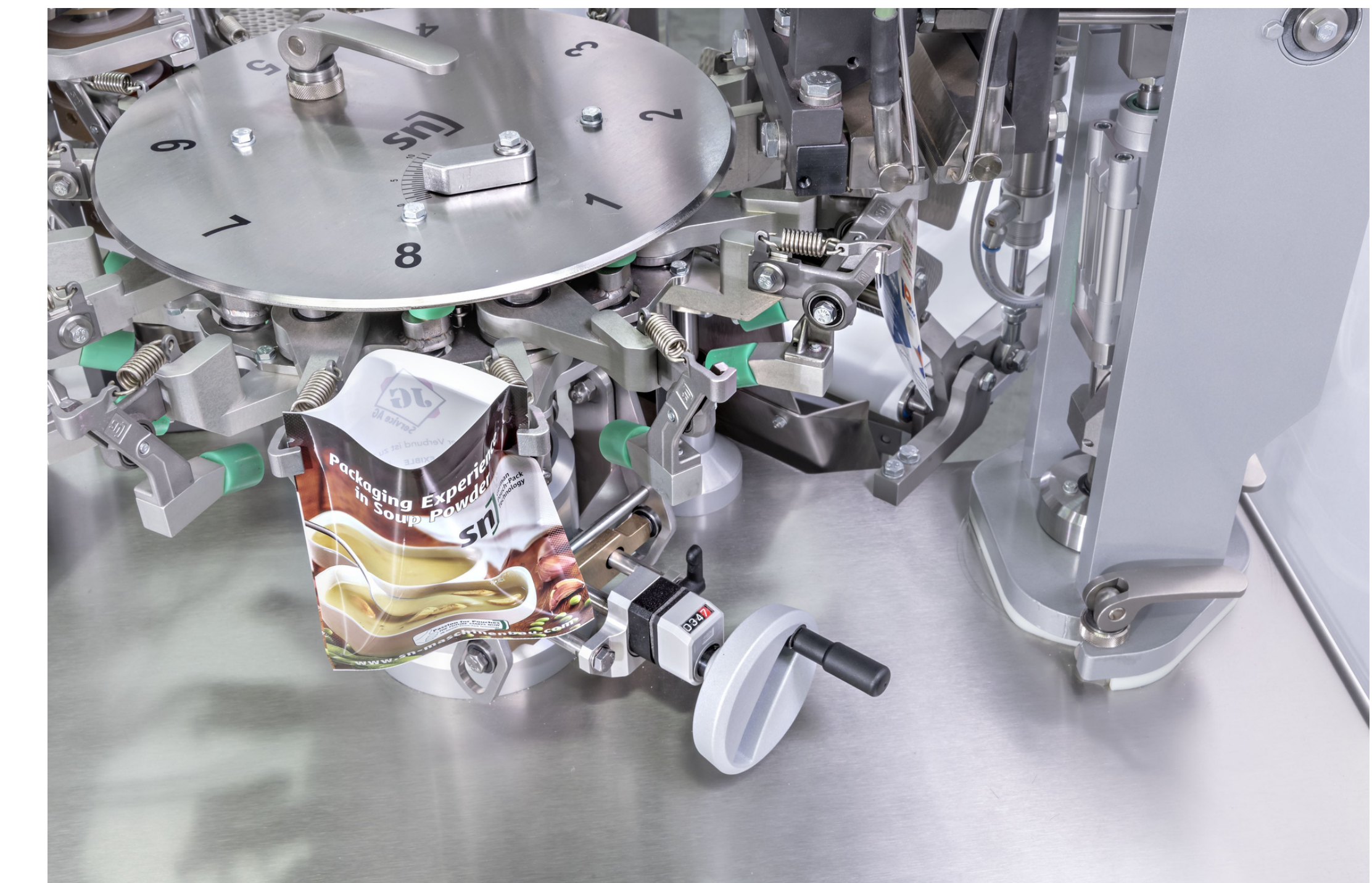
Robust, flexible and affordable, this entry level solution is ideal for taking the next step towards increasing your output, speed and efficiency.

Offering a high degree of flexibility, the FME 50 is the perfect solution for a growing company, allowing the ability to quickly and effectively change formats for your requirements.

Whether you have landed a new contract, looking to bring production in house, or want to increase output, this affordable solution is the ideal stepping stone.



Integrated control cabinet



Central gripper adjustment (manual)

FME 50 Highlights

- Small footprint
- Easy commissioning ("PLUG & PLAY") - reduced training hours, fast familiarisation
- Highly flexible - Format change within 15 minutes
- Durable, high quality machine components
- Optimised access to all machine parts thanks to new enclosure concept
- Control cabinet integrated in the machine table
- Central pouch gripper adjustment (manual)
- Simplified folding wedge adjustment
- Very low power consumption: ca. 2 kWh during production



Simple & flexible

With the proven SN Maschinenbau technology, the FME 50 supports various pouch sizes, including stand-up pouches, four-side sealed pouches and gusseted pouches, with manual operation allowing for format changes within 15 minutes. Sustainable films and the insertion of resealing systems (zipper) are also possible, providing a versatile solution for manufacturers. The FME 50 does all this operating with a surprisingly low energy expenditure.

Despite its small size, the FME 50 offers a high degree of flexibility, allowing for product packaging from a wide range of industries. This solution also reaches speeds of up to 100 cycles per minute (depending on the product and the pouch size).

With the optionally available auger dosing system, which has been specially developed for the FME 50, protein powder, cocoa powder, spices, sugar and chemical powders can be filled with high precision. Scale dosing enables the precise filling of all kinds of chunky goods, such as snacks, pet food or household products. SN offers a synchronization for a multihead weigher including filling flaps and format parts.

A variety of possibilities



Filling flaps for filling chunky products

Chunky and solid products are available in countless variations, such as prepacked or unpacked confectionery, snacks, nuts, cereals and even pet food and dairy products such as grated cheese or mozzarella pieces.

The product drops from a dosing scale mounted above the FME 50 into the filling flaps at precisely timed intervals, ensuring optimum filling.

In addition to a vibrating unit and pouch support, a product gassing unit can also be implemented.



SDE 10: Our solution for powdery products

From spices, herbs and ready mixes to instant products and protein powder, SN's SDE 10 auger dosing system offers simple, reliable and precise dosing.

A stainless steel storage hopper and an infinitely variable agitator are standard features of the SDE 10. The screw dosing unit can be swivelled out for more convenient cleaning. The integrated height adjustment by handwheel also ensures reliable reproducibility for recurring product changes.

The entry into the world of horizontal FFS pouch packaging machines

The FME 50 is unique thanks to its compactness and high degree of flexibility. The central pouch gripper adjustment on the rotary table and the optimised height adjustment of the folding wedge contribute to a reduction of format changeover times, greatly simplifying operation. In addition, the new protective covering concept, including easy access to all relevant machine components supports handling, cleaning and maintenance of the machine.

The modern pouch packaging machine, with integrated control cabinet, is supplied as a complete system. This reduces the time for commissioning by our technician to a maximum of one day.

Just "PLUG & PLAY". With a preset format the FME 50 can be used immediately after installation and connection at the production site. This saves valuable time and money!

Technical details FME 50	
Specifications	FME 50
Pouch size [mm]	Width 50 - 170 Length 70 - 210
Machine output [Pouches/min.]	up to 80* (100*) * depending on filling characteristics and pouch size
Packing material	sealable film
Design	for processing dry products
Safety equipment	fulfills the international standard safety regulations e.g. CE , UL, OSHA
Power consumption in operation [kWh]	approx. 2,0 ¹⁾
Electricity supply	3 x 400/230V + N + PE, 50/60 HZ
Voltage [V]	400 / 230 / 24
Air consumption	approx. 200 - 300 NI/min., 6 bar ¹⁾
Machine dimensions L x W x H [mm]	approx. 3.700 x 1.250 x 2.010 ¹⁾

¹⁾ Depending on configuration. Technical modifications reserved.

Standard equipment

- Single sealing frames - quick and easy format changeover
- Central gripper adjustment (manual operated)
- Decentral control structure for all motion drives
- Integrated machine cabinet
- Empty pouch discharge on station 8
- Swiveling 7" touch screen
- Discharge conveyor belt 1.100 mm

Optional equipment

- Stand-up pouch equipment
- Zipper integration
- Auger doser and/or multihead scale synchronization
- Double vertical sealing and cooling
- Printer synchronization
- Preparation for dust extraction
- Swiveable top sealing for easy maintenance
- (further options on request)

Take the next step. Contact us to find out how the FME 50 could help improve your business.



82 Voltri St, Mentone, VIC, 3194, Australia

Phone: 03 9584 8111

Email: info@nupac.com.au

Stock machine available. Minimal lead time